

LEARN ABOUT THE FOUR SEASONS

For Preschool and Elementary School Kids



Winter

In many places, winter is very cold. Snow falls. People have to wear thick jackets, hats and scarves. Kids build snowmen and go sledding. Animals sleep all winter, which is called hibernation. Or the move to warmer places, which is called migration.



Spring

In spring, the weather is warmer. A lot of rain falls. New plants grow. Leaves grow back on trees. Many baby animals are born.



Summer

Summers often have hot weather. It is sometimes too hot to play outside during the day. People like to go to the beach to cool off. People usually wear shorts and t-shirts, or summer dresses.



Fall

In the fall, leaves turn red, yellow and brown and start to fall from the trees. The weather becomes colder. Animals eat a lot of food to prepare for hibernation. Some animals like squirrels gather a lot of food and store it away for the winter. Children enjoy jumping in piles of leaves.

Match the Season to the correct picture.



Winter



Spring



Summer



Fall

TREES THROUGH THE SEASONS



Winter

Winter trees often have no leaves. Trees that lose their leaves are called deciduous trees.



Spring

In spring, leaves start to grow back on the trees. Some trees have flowers.



Summer

In summer, the trees are filled with leaves.



Fall

In the autumn or fall, leaves turn red, yellow and brown. They fall from the trees. Losing leaves helps trees survive winter.

Draw a line to match the tree to the correct season.



Winter



Spring



Summer



Fall

ANIMAL SURVIVAL IN WINTER

It can be difficult for animals to find food in the winter. Animals have different ways of surviving.



Hibernation

Some animals, like bears and groundhogs, hibernate or sleep all winter. They eat a lot of food to put on fat during the fall. Their bodies use the fat to keep them alive while they sleep.



Migration

Some animals, such as many birds and butterflies, migrate or move to warmer places. They leave cold areas in the north and move to warmer places in the south. Monarch Butterflies migrate from Canada to Mexico.



Forage

Some animals, such as deer, forage or search for whatever food they can find.



Gather and Store

Some animals gather food in the Fall. They hide or store it for the winter. They then eat their store of food during the winter.

Match the animal to its method of survival.



HIBERNATION

MIGRATION

FORAGE

GATHER AND STORE

DO ALL PARTS OF THE WORLD HAVE THE FOUR SEASONS?

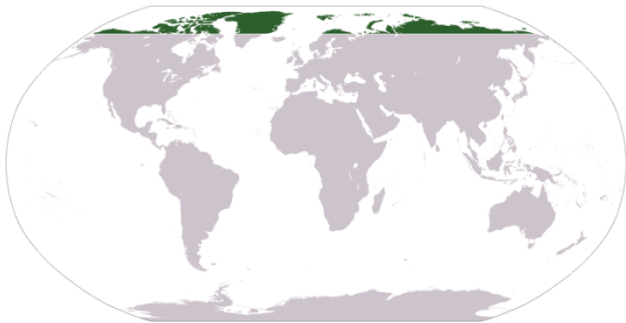
Not all parts of the world have seasons like winter, spring, summer and fall. Some areas are cold all year long. Some areas are warm all year long. Some areas have hot seasons and rainy seasons.



Antarctica is the continent at the very bottom of the map

Antarctica

Antarctica is a continent. It is at the South Pole. It is cold all year long. It is warmer in summer than in winter. But even in summer, it is freezing. Penguins live in Antarctica.



The Arctic Circle is the area colored in green

Arctic Circle

The Arctic Circle is a large area around the North Pole. It is also cold all year long. Polar bears live in the Arctic Circle.



The Tropics is the uncovered area

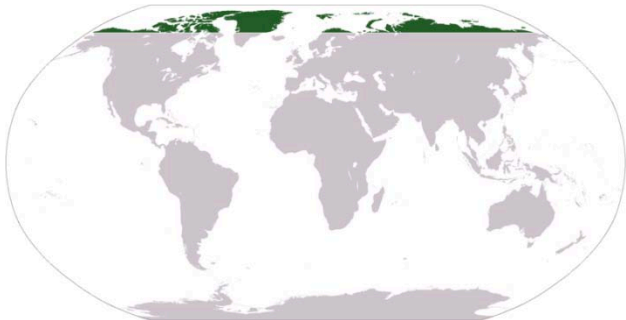
The Tropics

The Tropics is an area that runs along the Earth's equator. It is warm all year long. Places in the tropics often have rainy seasons, where a lot of rain falls.

Match the location to the correct word.



ARCTIC CIRCLE



THE TROPICS



ANTARCTICA

All Contents © 2012 EarlyKnowledgeforKids.org

The images are in the Public Domain and may be used by others.

No part of **Learn about the Four Seasons** may be reproduced or distributed in any form or by any means, or stored in a database or retrieval system. Multiple copies may be made for personal or classroom use but may not be distributed in any way.